

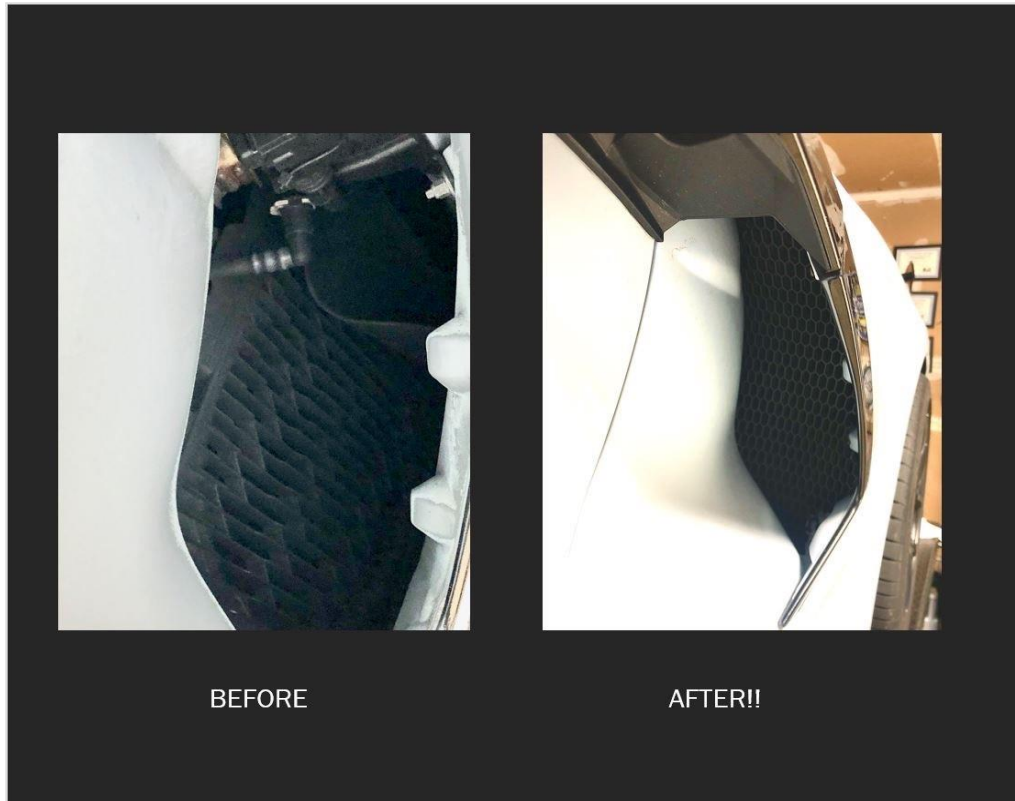
Radiator Grille Store

www.radiatorgrillestore.com
Naperville, IL 6064



2020+ Chevrolet Corvette Side Intake Grille Installation Procedure

i Note: it is best to protect your paint with painter's tape during the installation procedure. Though not necessary if care is taken.



Tools Required

Gloves as the grilles can be sharp. Painter's tape for paint protection if you would like. An oven or hair dryer. A whole bunch of patience to install the side intake grilles!

Procedure for C8 Side Intake Grilles

1. For those with the side intake grilles, take a deep breath and pat yourself on the back. The easy part of the install is behind you. Practice those swear words and stretch those hands. The install involves no tools, except your hands. The install is a series of movements with the plastic that require some slight bending and tweaking. Do not do this with cold ABS plastic as it can crack if bent too far in cold conditions.
For an exponentially easier installation, heat the grille up to 160 degrees with a hair dryer or oven. Trust us, so much easier! You can also help ease the installation by warming the grilles in the sun or with a hair dryer prior to installation.
2. The grille has a rectangle protrusion, that goes to the outside of the intake. That will differentiate them from drivers and passenger sides (oblong tall, with the tab to the lower left is the passenger side, tab to the lower right is the driver's side). Insert the grille into the side intake cavity as shown for the passenger side. Note the orientation of the small rectangle protrusion.



3. Slide the top portion up to the top of the cavity. The passenger side should align with the ground strap at approximately 6-7 rows of hexagon holes down from the top (The driver's side, start the tip of the grille at the foremost Torx bolt at the top of the cavity, photo below shows the rear Torx just to the left of the green sticker). Once that alignment is achieved start getting the portion of the grille that is near the cockpit, in behind the inner body panel. Pull the grill forward to only get the inner part behind the body panel that is near the door.

- a On the driver's side, be careful of the gas filler neck sensor. Place in front of that sensor and slide up to where the peak of the grille should almost be touching the closest torx bolt (you can see the far one in the photo below at the top of the photo, peaking out near the green sticker). Then tuck the grille behind the inner body work. (go to step 4).





Passenger side houses the Z51 cooler if optioned. Place the top of the grille towards the top of the cavity, align the grille for height with the green ground wire at approximately 6-7 hexagon holes down for the peak of the grille.

4. As the grille is slid into position, grasp the outer portion of the grille to start the process of cussing, I mean, the gentle, peaceful installation! The grille will need to be contorted to fit in front of the lower external side intake mounting screw and so that the small rectangle protrusion sits flush with the outer portion of the side intake. Once the alignment to the inner body panel is complete from the above steps, now it is time to access your inner yoga instructor.
 - a Open the car door, this allows you to sit on the door sill allowing more space for you to move.
 - b Turn your top hand upside down (thumb pointing down) and grab the top $\frac{3}{4}$ of the grille with your thumb in the middle of the grille, and grab with your lower hand around the protruding tab and place your thumbs in the middle of the grille.
 - c First, start by bending the grille with the top hand toward the inner body about 2 inches before starting the next step.
 - d We need to decrease the radius of the lower section to clear the lower body mount and place in its final position. With the lower hand wrapped around the tab, thumb in the middle of the grille, create a small “taco” with the lower hand by putting pressure with your thumb in the middle of the grille, decreasing the diameter of the lower section at the tab. This will decrease the width enough to pull the bottom portion of the grille in front of the body mount screw at the bottom of the cavity. Start with the top pulling forward, but closely follow with the bottom portion until it clears the body mount screw.
 - e Pull your hands out and ensure proper alignment.





The circle shows where the side intake mount bolt now resides. All hidden and pretty now! Also this shows where the rectangle protrusion contacts the outer grille body part. Once in position you are done! Rinse and repeat! Contact us with any questions, we are here to help!!